

34TH VOLVO YOUTH SAILING ISAF WORLD CHAMPIONSHIP

8 – 17 JULY 2004

GDYNIA, POLAND

Organizing Authority: The championship will be organized by the Gdynia Sport Centre and Polish Yachting Association.

SAILING INSTRUCTIONS

1. RULES

- 1.1 The championship will be governed by the 'rules' as defined in the *Racing Rules of Sailing*.
- 1.2 The prescriptions of the Polish national authority will not apply.
- 1.3 Class rules requiring competitors to be members of the class association will not apply.

2. ADVERTISING

- 2.1 The advertising category of the championship is C as restricted by instruction 2.2.
- 2.2 In accordance with the ISAF Advertising Code, Category C advertising on the supplied equipment is only available to the organizing authority. Boards will be required to display event sponsor advertising on the sail.

3. IDENTIFICATION

- 3.1 Each boat shall carry on her mainsail (all) and bow (not Mistrals) the national letters. For all classes except the Mistral they are supplied by the organizing authority. Mistrals may display sail numbers. This changes rule G 1.
- 3.2 Girls' Mistrals shall carry a red diamond on their sails (class rule).
- 3.3 Each day while racing, the first, second and third boat in series scores at the beginning of the day shall display a yellow, blue or red sticker, respectively, on each side of her mainsail. The organizing authority will supply the stickers at the team leaders meeting. The stickers shall be placed on both sides of the sail (back to back), just under the sail letters, 20 cm from the leach of the sail.

4. CAMERAS AND ELECTRONIC EQUIPMENT

Boats may be required to carry cameras, sound equipment or positioning equipment as specified by the organizing authority.

5. NOTICES TO COMPETITORS

Notices to competitors will be posted on the official notice board located outside the Race Office at the Marina of Gdynia. Unofficial copies of notices to competitors may be posted on notice boards in the accommodation areas.

6. CHANGES TO SAILING INSTRUCTIONS

Any change to the sailing instructions will be posted before 0900 on the day it will take effect, except that any change to the schedule of the first races of a day will be posted by 2000 on the day before it will take effect. Further rescheduling may take place during the day.

7. SIGNALS MADE ASHORE

- 7.1 Signals made ashore will be displayed on the official flagpoles at the Marina of Gdynia. When a signal is displayed over a racing area flag, it applies to that area only.
- 7.2 When flag AP is displayed ashore, '1 minute' is replaced with 'not less than 45 minutes' in race signal AP.
- 7.3 Flag D with a sound signal means: 'The warning signal will be made not less than 60 minutes after flag D is displayed or not before the scheduled time, whichever is later. Boats or boards shall not leave their allocated berths until this signal is made'. Practice sailing on 8 and 9 July is only allowed if Flag D is displayed ashore.

8. BOATS AND BOARDS

- 8.1 Boats but not Mistrals, will be provided for all competitors. Competitors with provided boats shall not modify them or cause them to be modified in any way except that:
 - (a) A compass may be tied or taped to the hull or spars.
 - (b) Wind indicators, including yarn or thread, may be tied or taped anywhere on the boat.
 - (c) Hulls, centreboards and rudders may be cleaned, but only with water.
 - (d) Adhesive tape may be used anywhere above the water line.
 - (e) All fittings or equipment designed to be adjusted may be adjusted, provided that the class rules are complied with.
 - (f) Competitors may use their own sponges and a hand bailer.
 - (g) For the 420 only: Competitors shall not untie the shrouds while afloat. The spreader angle shall not be adjusted to a position where the forward hole in the spreader and the aftermost hole in the spreader bracket are being used.
 - (h) For the Laser only: Competitors must use their own lines and blocks (including cunningham, downhaul and kicker systems) and tiller/tiller extension, provided that the class rules are complied with.

- 8.2 All equipment provided with the boat for sailing purposes shall be in the boat while afloat except when the provided equipment is replaced by items in compliance with instruction 8.1.
- 8.3 The penalty for not complying with one of the above instructions may be disqualification from all races sailed in which the instruction was broken.
- 8.4 Failure of supplied equipment will not be grounds for redress. This changes rule 62.1(a).
- 8.5 Substitution of damaged or lost equipment will not be allowed unless approved by the ISAF Technical Delegate.
- 8.6 For the supplied equipment only: Competitors shall report any damage or loss of equipment, however slight, to the manufacturer's representative of the relevant class immediately after securing the boat ashore. Special forms will be available from the race office or from the manufacturer's representative to record the damage or loss. The penalty for breaking this instruction, unless the jury is satisfied that the competitor made a determined effort to comply, will be disqualification from the race most recently sailed.
- 8.7 Advice to competitors regarding collision damage:
- If your boat is involved in an incident with another boat which may have resulted in damage, and you believe the other boat was responsible for this damage, you are advised to protest even if the other boat takes a 720° (360°) turns penalty. If on coming ashore the skipper of the other boat accepts responsibility for the damage and signs a statement to this effect on a damage registration form, the protest may be withdrawn under rule 63.1.

9. SCHEDULE OF RACES

- 9.1 Racing is scheduled from 9 July 2004 to 16 July 2004 with a lay day (no racing) scheduled on 13 July 2004.
- 9.2 The numbers of races scheduled for all classes are as follows:
- Number of races: 12
- 9 July 2004 – Practice Race
- 10 July 2004 – 3 Races
- 11 July 2004 – 2 Races
- 12 July 2004 – 2 Races
- 13 July 2004 – Lay Day
- 14 July 2004 – 2 Races
- 15 July 2004 – 2 Races
- 16 July 2004 – 1 Race
- 9.3 The scheduled time of the warning signal for the first race each day is 1155.

- 9.4 When more than one race (or sequence of races, for two or more classes) will be held on the same day, the warning signal for each succeeding race will be made as soon as practicable. To alert boats that another race or sequence of races will begin soon, the postponement signal will be displayed for at least four minutes before a warning signal is displayed.
- 9.5 Two races will be sailed on 16 July 2004 only if fewer than four races have been completed by that date.
- 9.6 On 16 July 2004 no warning signal will be made after 1400.

10. CLASS FLAGS

Class flags will be:

Area Alpha

Windsurfer, boys	White flag – black Mistral insignia
Windsurfer, girls	Yellow flag – black Mistral insignia

Area Bravo

Single-handed, boys	White flag – red Laser insignia
Single-handed, girls	Red flag – white Laser insignia

Area Charlie

Double-handed, boys	White flag – blue 420 insignia
Double-handed, girls	Red flag – white 420 insignia
Multihull, open	White flag – red Hobie insignia

11. RACING AREAS

- 11.1 Attachment A shows the location of racing areas.
- 11.2 Racing area flags on the race committee boats will be:

Area	Flag
Alpha – Mistral	Yellow
Bravo – Laser/Laser Radial	Pink
Charlie – 420 and Hobie Cat 16	Orange

12. THE COURSES

- 12.1 The diagrams in Attachment B show the courses, including the course signals, the approximate angles between legs, the order in which marks are to be passed, and the side on which each mark is to be left. Mark 4 is shown as a gate, 4S/4P, which the race committee may replace by a single Mark 4. If a single Mark 4 is used, it is to be left to port.
- 12.2 When there is a gate, boats shall sail between the gate marks from the direction of the previous mark and round either gate mark.

12.3 The length of the course will be set for a target time of 60 minutes. For the Windsurfer boys and girls the target time will be 40 minutes.

12.4 Courses will not be shortened. This changes rule 32.

13. MARKS

Marks 1, 2, 3 and 4 (4S/4P) will be as follows:

Area	Mark
Alpha – Mistral	Triangular yellow with Volvo brand
Bravo – Laser/Laser Radial	Triangular pink with Volvo brand
Charlie – 420	Triangular orange with Volvo brand
Charlie – Hobie Cat 16 mark 1A and 2A	Spherical orange with Volvo brand

13.1 The starting marks will be the race committee starting boat at the starboard end and a buoy or a boat displaying a racing area flag at the port end. See Attachment B.

13.2 The finishing marks will be the race committee finishing boat at the port end and a buoy or a boat displaying a blue flag, at the starboard end. See Attachment B.

13.3 New marks as provided in instruction 15.1 will be of the same shape and colour as the original marks.

13.4 A race committee boat signalling a change of course is a mark as provided in instruction 15.3.

14. THE START

14.1 The starting line will be between staffs displaying the racing area flags on the starting marks.

14.2 Boats whose warning signal has not been made shall avoid the starting area.

14.3 A boat starting later than four minutes after her starting signal will be scored DNS. This changes rule A4.1.

14.4 If possible, a race committee boat near mark 1 will display flag X and the national letters of boats that broke rule 29.1 or 30.1(OCS), or 30.3 (BFD). Repetitive sound signals will be made to draw attention to this display. Boats whose national letters are displayed, shall immediately retire from the race. If they fail to do so they will be disqualified without a hearing and their score will not be excluded. Race committee action or non-action under this instruction will not be grounds for redress. This changes rule 62.1(a) and 88.3(b).

15. CHANGE OF THE POSITION OF THE NEXT MARK

- 15.1 To change the position of the next mark, the race committee will lay a new mark (or move the finishing line) and remove the original mark as soon as practicable. The change will be signalled before the leading boat has begun the leg, although the new mark may not yet be in position. Any mark to be rounded after rounding the new mark may be relocated without further signalling to maintain the course shape. When in a subsequent change a new mark is replaced, it will be replaced by an original mark.
- 15.2 Rule 33 is changed so that, instead of displaying a compass bearing, the race committee will display a green flag if the direction is changed to starboard or a red flag if the direction is changed to port.
- 15.3 Except at a gate, boats shall pass between the race committee boat signalling the change of course and the nearby mark, leaving the mark to port and the race committee boat to starboard. This changes rule 28.1.

16. THE FINISH

The finishing line will be between a staff displaying the racing area flag on the finishing mark at the port end and the starboard-end finishing mark.

17. PENALTY SYSTEM

- 17.1 For the Hobie Cat 16 class only rule 44.1 and 44.2 are changed so that the 720° turn is replaced by a 360° turn.
- 17.2 A boat that has taken a penalty or retired under rule 31.2 or 44.1 shall complete an acknowledgement form at the race office within the protest time limit.
- 17.3 Appendix N will apply as changed by instruction 17.1 and 17.4.
- 17.4 Rule N2.3 is changed so that when a boat is protested a third or more time during the series she may acknowledge her breach by immediately retiring from the race. The score for this race shall not be excluded. If she fails to do so she shall be disqualified without a hearing from all races in the series, with no score excluded, and the protest committee shall consider calling a hearing under rule 69.1(a).

18. TIME LIMITS

- 18.1 Time limits are as follows:

Class	Time limit	Mark 1 time limit	Time limit after the first
boats	two hours	30 minutes	20 minutes
boards	one hour	20 minutes	15 minutes

- 18.2 If no boat or board has passed Mark 1 within the Mark 1 time limit the race will be abandoned.

18.3 Boats failing to finish within time limit after the first boat (see instruction 18.1) sails the course and finishes will be scored Did Not Finish. This changes rule 35 and A4.1.

19. PROTESTS

- 19.1 Protest forms are available at the race office. Protests shall be delivered there within the protest time limit.
- 19.2 For each class, the protest time limit is 90 minutes after the last boat has finished the last race of the day. The same protest time limit applies to all protests by the race committee and jury and to requests for redress. This changes rules 61.3 and 62.2.
- 19.3 Notices will be posted within 30 minutes of the protest time limit to inform competitors of hearings in which they are parties or named as witnesses. Hearings will be held in the jury office beginning as soon as possible.
- 19.4 Notices of protests by the race committee or jury will be posted to inform boats under rule 61.1(b).
- 19.5 A list of boats that, under instruction 17.3, have acknowledged breaking rule 42 or have been disqualified by the jury will be posted before the protest time limit.
- 19.6 For the purpose of rule 64.3(b) the 'authority responsible' is the ISAF Technical Delegate.
- 19.7 Breaches of instructions 2.2, 3, 4, 7.3, 8.5, 8.6, 14.2, 17.2, 21, 25, 26 and 27 will not be grounds for a protest by a boat. This changes rule 60.1(a). Penalties for these breaches may be less than disqualification if the jury so decides.
- 19.8 On 16 July 2004 a request for reopening a hearing shall be delivered within the protest time limit if the party requesting reopening was informed of the decision on the previous day; no later than 30 minutes after the party requesting reopening was informed of the decision on that day. This changes rule 66.
- 19.9 Decisions of the jury will be final as provided in rule 70.4.

20. SCORING

- 20.1 The Low Point scoring system of Appendix A will apply.
- 20.2 Five races are required to be completed to constitute a series.
- 20.3 (a) When fewer than 6 races have been completed, a boat's series score will be the total of her race scores.
- (b) When from 6 to 8 races have been completed, a boat's series score will be the total of her race scores excluding her worst score.
- (c) When 9 or more races have been completed, a boat's series score will be the total of her race scores excluding her two worst scores.
- 20.4 To request correction of an alleged error in posted race or series results, a boat shall complete a scoring enquiry form available at the race office.
- 20.5 The scoring abbreviation for a discretionary penalty imposed under instruction 19.7 will be DPI.

21. SAFETY REGULATIONS

21.1 Check-out and Check-in Ashore

Before going on the water shall leave their accreditation card at the beach control station. Immediately after arrival ashore, but no later than the protest time limit, the crew member of each competing boat shall pick up their accreditation card.

21.2 A boat that retires from a race shall notify the race committee as soon as possible.

21.3 Boats not leaving the shore for the day's races shall notify the race office as soon as possible.

21.4 Competitors shall wear life jackets or other adequate personal buoyancy while afloat. Wet suits and dry suits are not adequate personal buoyancy.

22. REPLACEMENT OF CREW

Substitution of competitors will not be allowed after 9 July 2004 1800 except with prior written approval of the organizing authority.

23. EQUIPMENT AND MEASUREMENT CHECKS

A boat or equipment may be inspected at any time for compliance with the class rules and sailing instructions. On the water, a boat can be instructed by a race committee measurer to proceed immediately to a designated area for inspection.

24. OFFICIAL BOATS

Official boats will be marked as follows:

Official Boat	Flag
Jury	Flag "JURY"
Race Committee	Racing Area Flag
Rescue	White Flags
Press boats	Flag "PRESS"

25. SUPPORT BOATS

25.1 Private or team support boats are not permitted. Team leaders, coaches and other support personnel may go afloat only in craft supplied by the organizing authority, and clearly marked as such, from the day of the practice race through the last race.

25.2 Team leaders, coaches and other support personnel shall neither make radio transmissions while afloat nor receive radio communications not available to all. This restriction also applies to mobile telephones.

25.3 Gear and or food (securely bagged and identified) may be picked up by the official team leader boats stationed off the starboard end of the starting line in all racing areas before the preparatory signal for each class.

25.4 Gear shall not be placed on any boat other than the team leader boats.

25.5 The gear may be reclaimed at the team leader boats until the protest time limit each day or between 0900 and 1000 on the following day upon presentation of the accreditation card. When two or more races are sailed on one day, gear may be collected from the team leader boats between races.

26. TRASH DISPOSAL

Boats shall not put trash in the water. Trash may be placed aboard support and race committee boats.

27. BERTHING

Boats shall be kept in their assigned spaces in the boat park.

28. RADIO COMMUNICATION

A boat shall neither make radio transmissions while afloat nor receive radio communications. This restriction also applies to mobile telephones.

29. Prizes

29.1 ISAF Medals

ISAF Medals in gold, silver and bronze will be awarded to the skipper and, where applicable, crew of the first, second and third place finishers.

29.2 ISAF Trophies – Double-handed Classes

- (a) The ISAF World Youth Sailing Championship Trophy will be awarded to the winning crew in the boys' double-handed class.
- (b) The RYA Trophy will be awarded to the winning crew in the girls' double-handed class.

29.3 ISAF Trophies – Single-handed Classes

- (a) The ISAF St. Lawrence Trophy will be awarded to the winner in the boys' single-handed class.
- (b) The ISAF Royal Netherlands Centennial Trophy will be awarded to the winner in the girls' single-handed class.

29.4 ISAF Trophies – Windsurfing Classes

- (a) The Paul Phelan Boardsailing Trophy will be awarded to the winner in the boys' windsurfing class.
- (b) The ISAF St. Moritz Boardsailing Championship Trophy will be awarded to the winner in the girls' windsurfing class.

29.5 Special Trophies

- (a) The Volvo Trophy for the top scoring national authority will be awarded. The best four race scores of each national authority will score points per race towards the trophy as follows:

Score	Points
1	10
2	9
3	8
4	7
5	6
6	5
7	4
8	3
9	2
10	1

If the fleets have not completed the same number of races the scores will be calculated for those races numbered in order of completion, completed by all fleets.

If there is a tie between two or more national authorities, they shall be ranked in order of their score in the last race. Any remaining tie shall be broken by using the National Authorities scores in the next to last race and so on until all ties are broken.

- (b) The Bengt Julin Trophy (Sportsmanship Award) may be awarded to a competitor who has shown exemplary behaviour and rules compliance during the championship. The winner will be selected by the chairman of the ISAF Youth Sailing Championship Sub-committee in conjunction with the organizing authority and jury.
- (c) The Prince Henry the Navigator Cup may be awarded to the double-handed crew, single-handed boy or girl, or windsurfing boy or girl, who has shown exemplary sportsmanship during all the races.

29.6 The ISAF Trophies

The national authority whose competitor has won a trophy is responsible for ensuring the safe return of the trophy to the ISAF representative at the 2005 championship venue so that it arrives by the official arrival day.

30. DISCLAIMER OF LIABILITY

Competitors participate in the championship entirely at their own risk. See rule 4, Decision to Race. The organizing authority will not accept any liability for material damage or personal injury or death sustained in conjunction with or prior to, during, or after the championship.

31. RIGHTS TO USE NAME AND LIKENESS

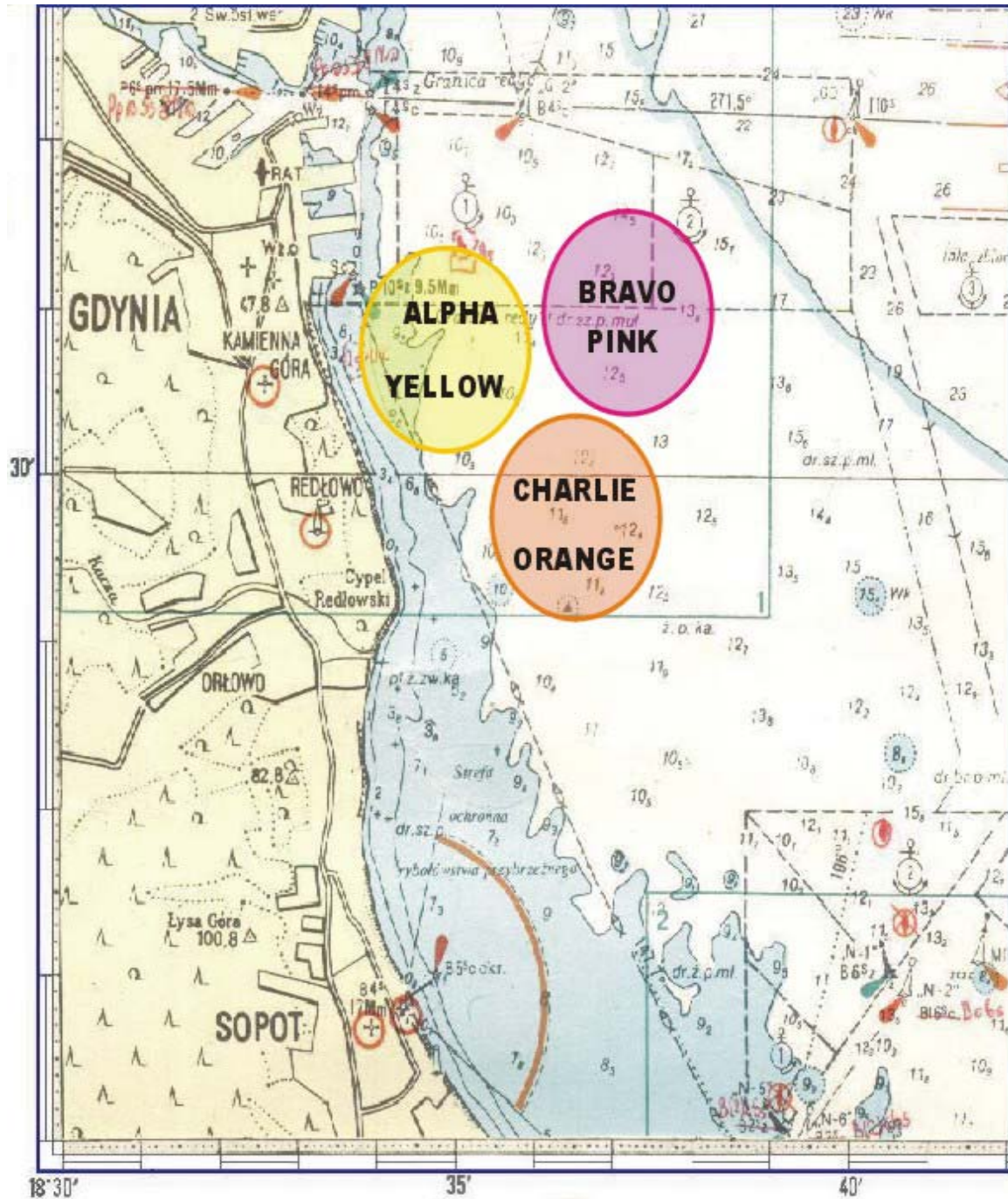
In participating in this championship, a competitor automatically grants to the organizing authority, the ISAF and the sponsors of the championship the right in perpetuity to make, use and show at their discretion any motion pictures, still pictures and live, taped or filmed television and other reproductions of him or her during the championship, and of all of his or her material related to the championship, without compensation.

32. INSURANCE

Each competitor shall have travel insurance with coverage for accidents and health care, valid in Poland.

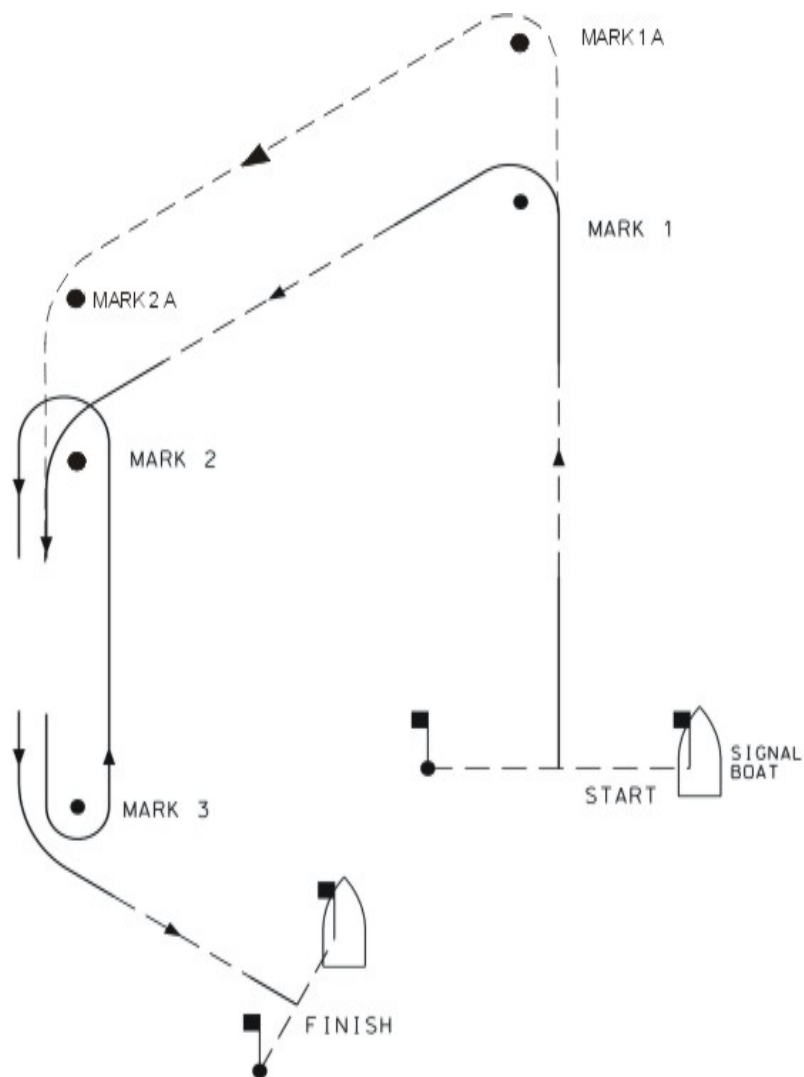
22 June 2004

ATTACHEMENT A - RACING AREAS



ATTACHEMENT B – COURSE DIAGRAMS

Attachment B-1



Course: TRAPEZOID OUTER

Course Mark rounding order:

Signal:

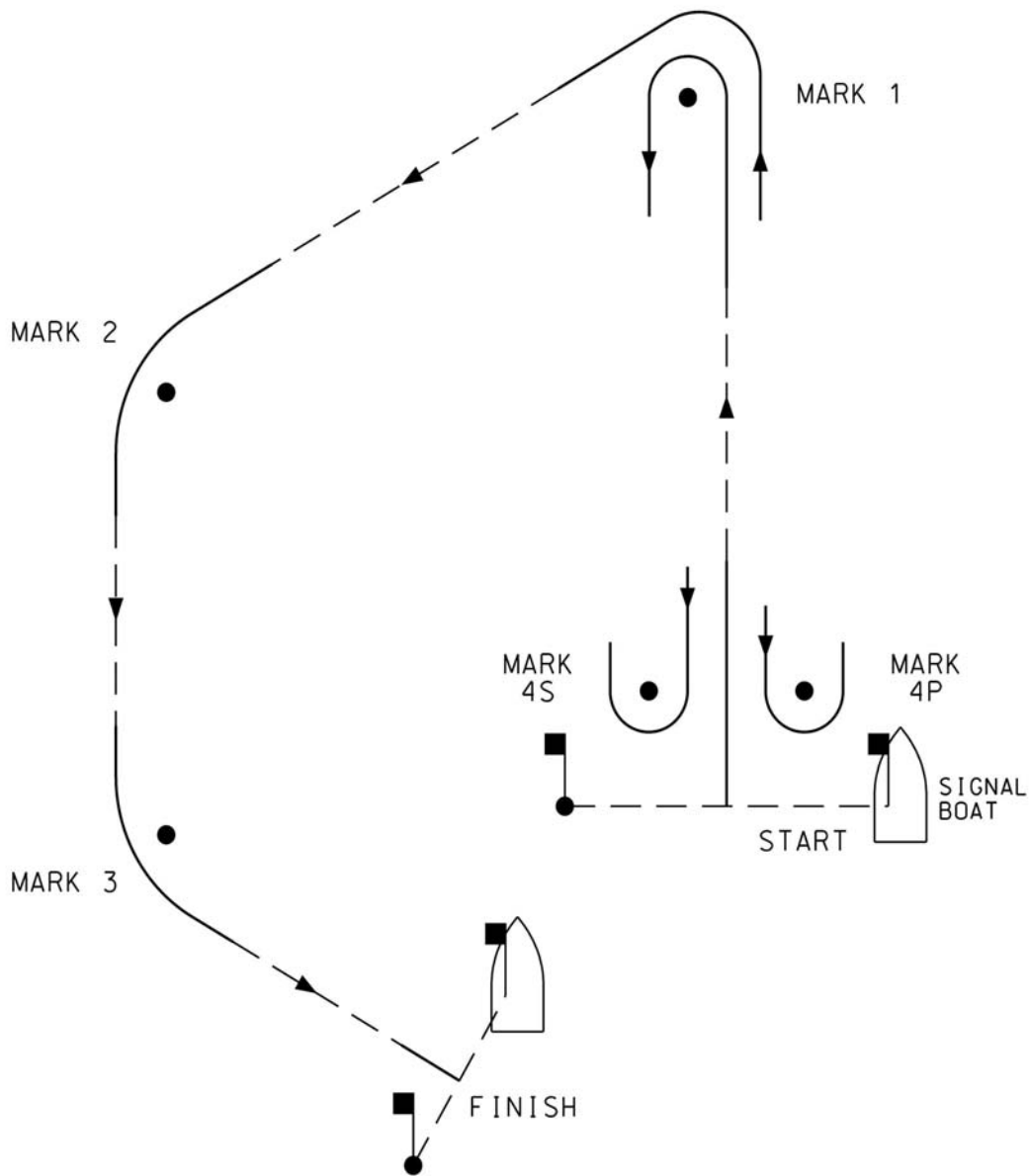
Pennant 1 START – 1 – 2 – 3 – 2 – 3 – FINISH

Pennant 2 START – 1A – 2A – 3 – 2A – 3 – FINISH

Interior angles at marks:

	Mark 1, 1A	Mark 2, 2A
Laser, Mistral	70°	110°
420, Hobie Cat 16	55-60°	110-120°

Attachment B-2



Course: TRAPEZOID INNER

Course Mark rounding order:

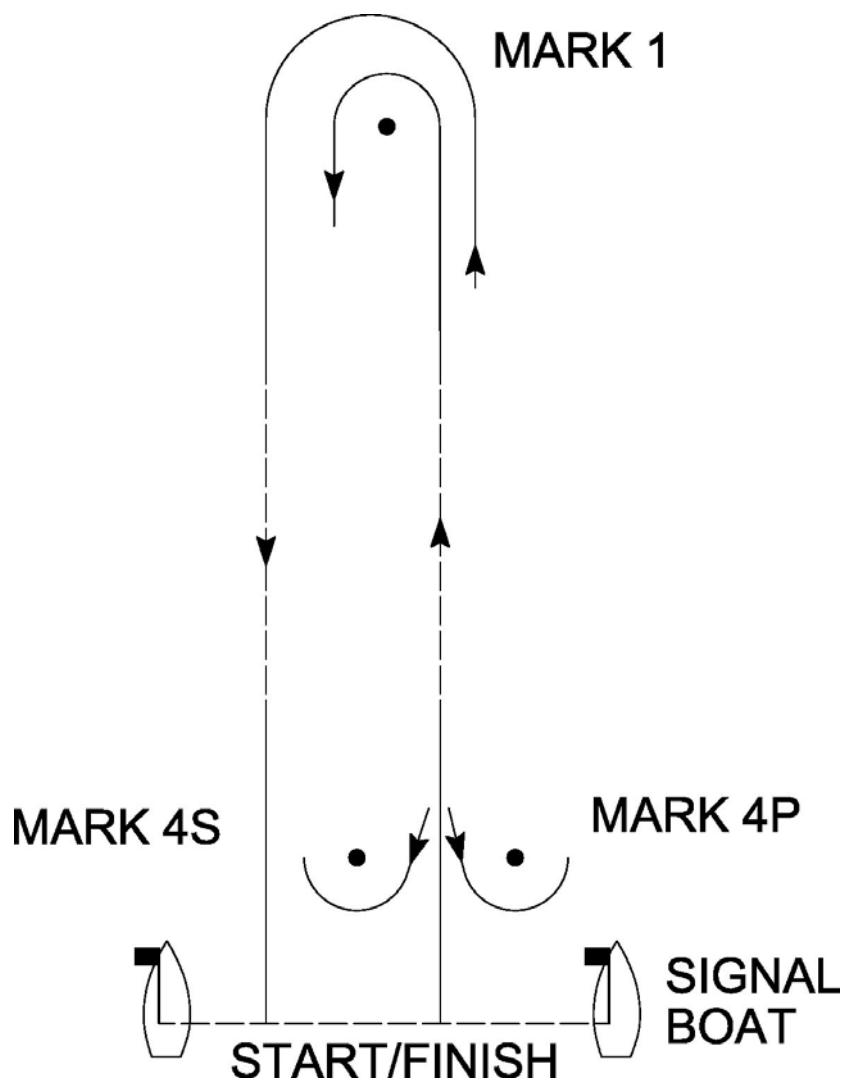
Signal:

Pennant 3 START – 1 – 4S/4P – 1 – 2 – 3 – FINISH

Interior angles at marks:

	Mark 1	Mark 2
Laser, Mistral	70°	110°
420	55-60°	110-120°

Attachment B- 3



Course: WINDWARD LEEWARD

Course	Mark rounding order:
Signal:	
Pennant 4	START – 1 – 4S/4P – 1 – FINISH
Pennant 5	START – 1 – 4S/4P – 1 – 4S/4P – 1 – FINISH
Pennant 6	START – 1 – 4S/4P – 1 – 4S/4P – 1 – 4S/4P – 1 – FINISH